

HEATING

venturiUK



Meinertz are a Danish supplier of high end made to order heating solutions and have through the years supplied special heating elements for some of the most prestigious projects in both Europe and the US.



GALVANISED



PAINTED



STAINLESS



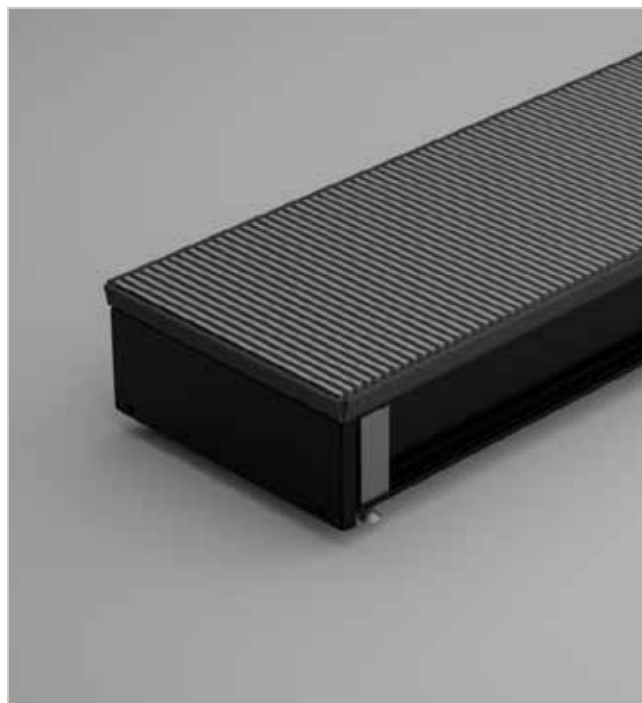
COPPER



CONVEC

An ultra slim fan assisted trench heating solution for use where space is severely limited.

- Compact 59x135mm design
- Ideal for refurb or where available depth is limited
- Wall, floor & corner solutions
- BMS compatible
- Colour options
- Whisper quiet



PROLINE

A versatile and stylish linear trench heater needing minimal floor space for high output.

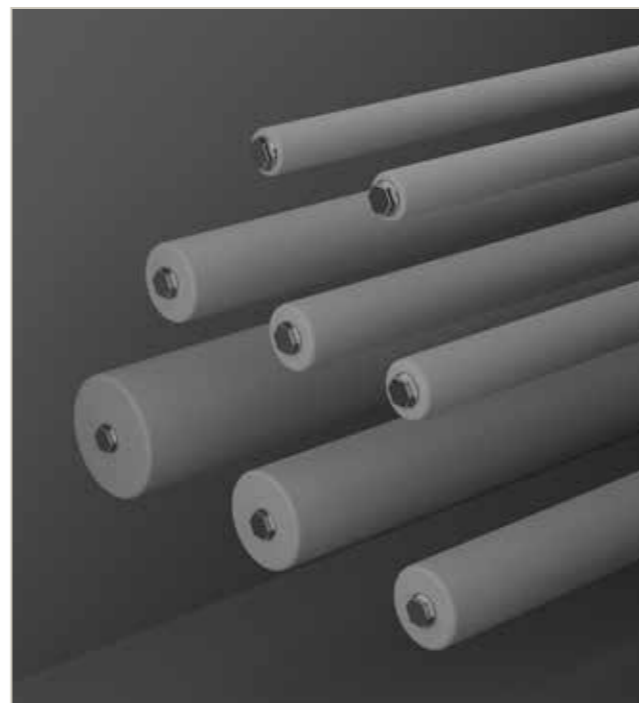
- Custom length and width available
- High heat output
- Supplied with or without steel trench
- Curved and corner solutions
- Low maintenance
- Robust design, withstands 250kg loads



PLAIN TUBES

Minimalist plain tubes which are robust and easy to clean and available in multiple tube diameters.

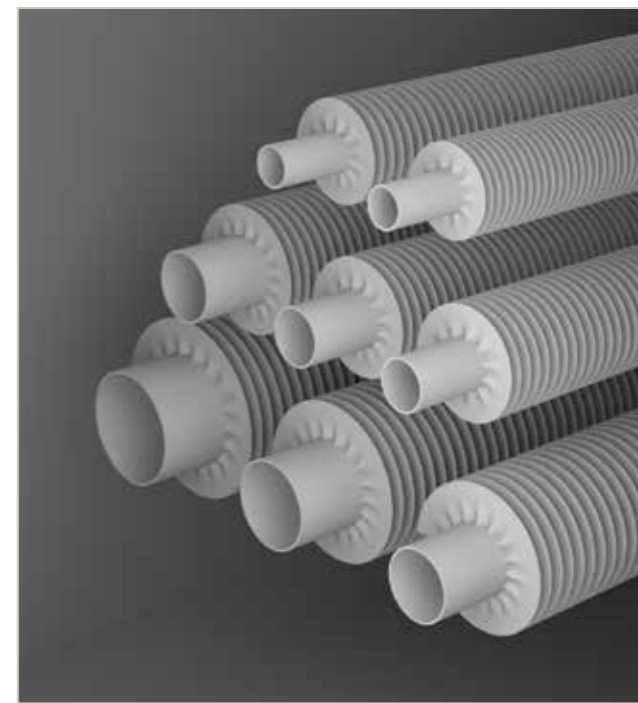
- Wall, floor and ceiling fix
- 0.3 to 6.0m lengths available
- 33 - 101mm diameters
- Curved options
- Clean lines
- Single or stacked options



FINNED TUBES

Elegant, high performance architectural solution for contemporary or traditional building design.

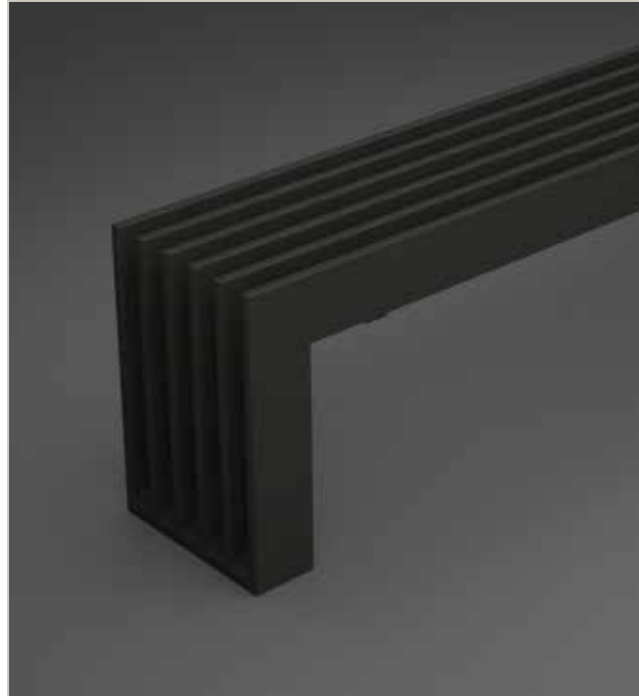
- Wall or floor fix
- 0.3 to 6.0m lengths available
- 73 - 164mm fin diameters
- Curved options
- Easy to clean
- Single or stacked options



L-LINE

Unique and contemporary heating solution with clean sharp lines.

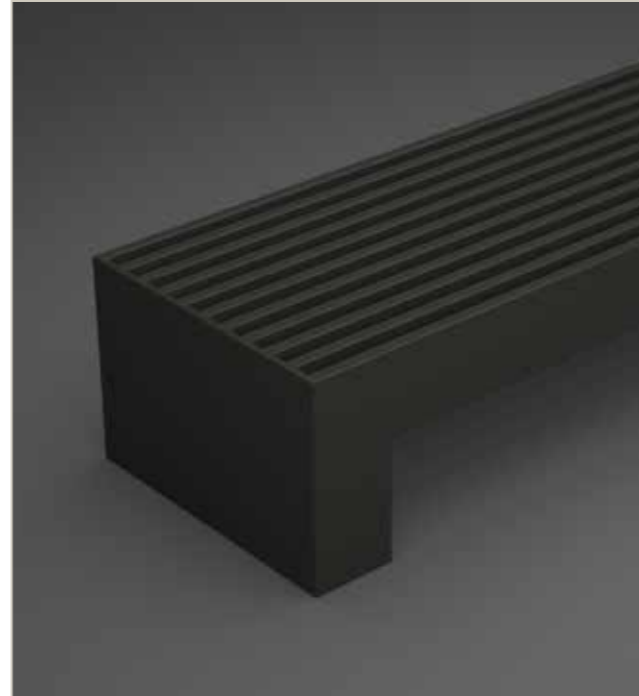
- Clean, sharp delineation
- Fully customisable design up to 3.0m length
- Stand alone feature
- Architectural design, practical function
- Dwindraught or primary heating source



SKYLINE PLINTH

Form & function combined - giving a practical and aesthetic solution to your heating requirements.

- Fully customisable design up to 3.0m length
- Dwindraught or primary heating source
- Low maintenance, easy clean solution
- Hidden pipework
- Robust but elegant design



BENCH HEATERS

Unique heating solution, with safe and practical seating.

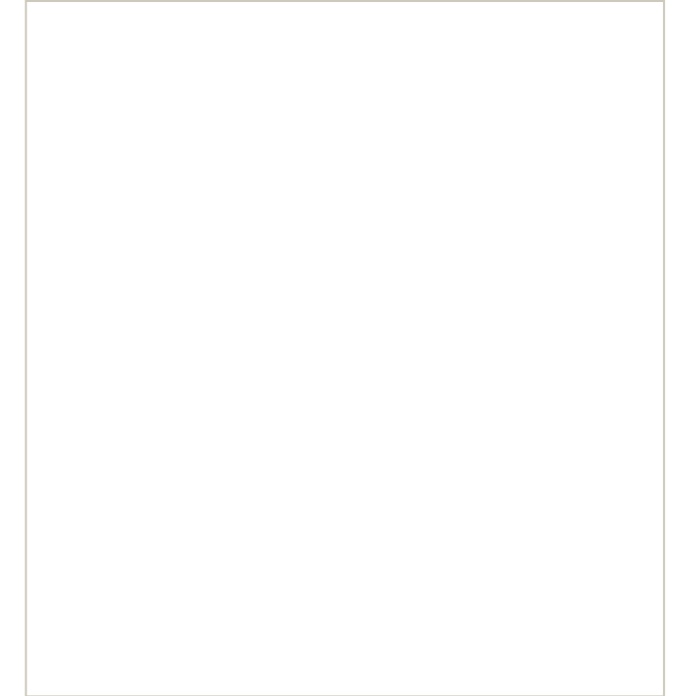
- Space saving, unique design
- Fully customisable
- Architectural feature
- Robust but stylish heating solution
- Various seat options



FRONT LINE CW HEATER

Sophisticated and versatile flat panel radiator solution.

- Elegant clean design
- Interchangeable front panels
- Possibility of applied finishes to front plate
- Vertical and horizontal variants
- Bespoke panels available for recess fitting

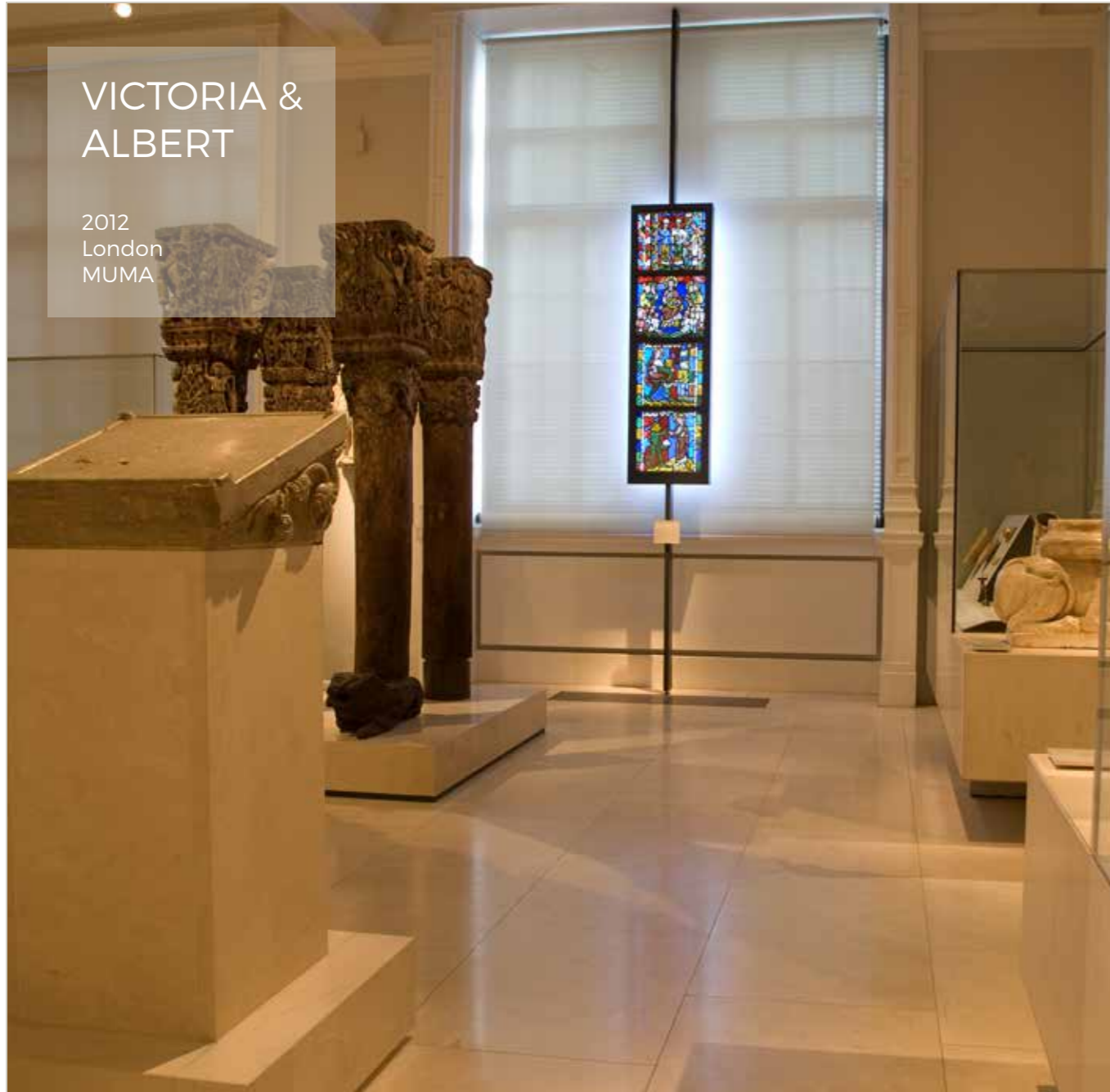




TOWER VIEW

2015
London
Thornley & Lumb





VICTORIA &
ALBERT

2012
London
MUMA

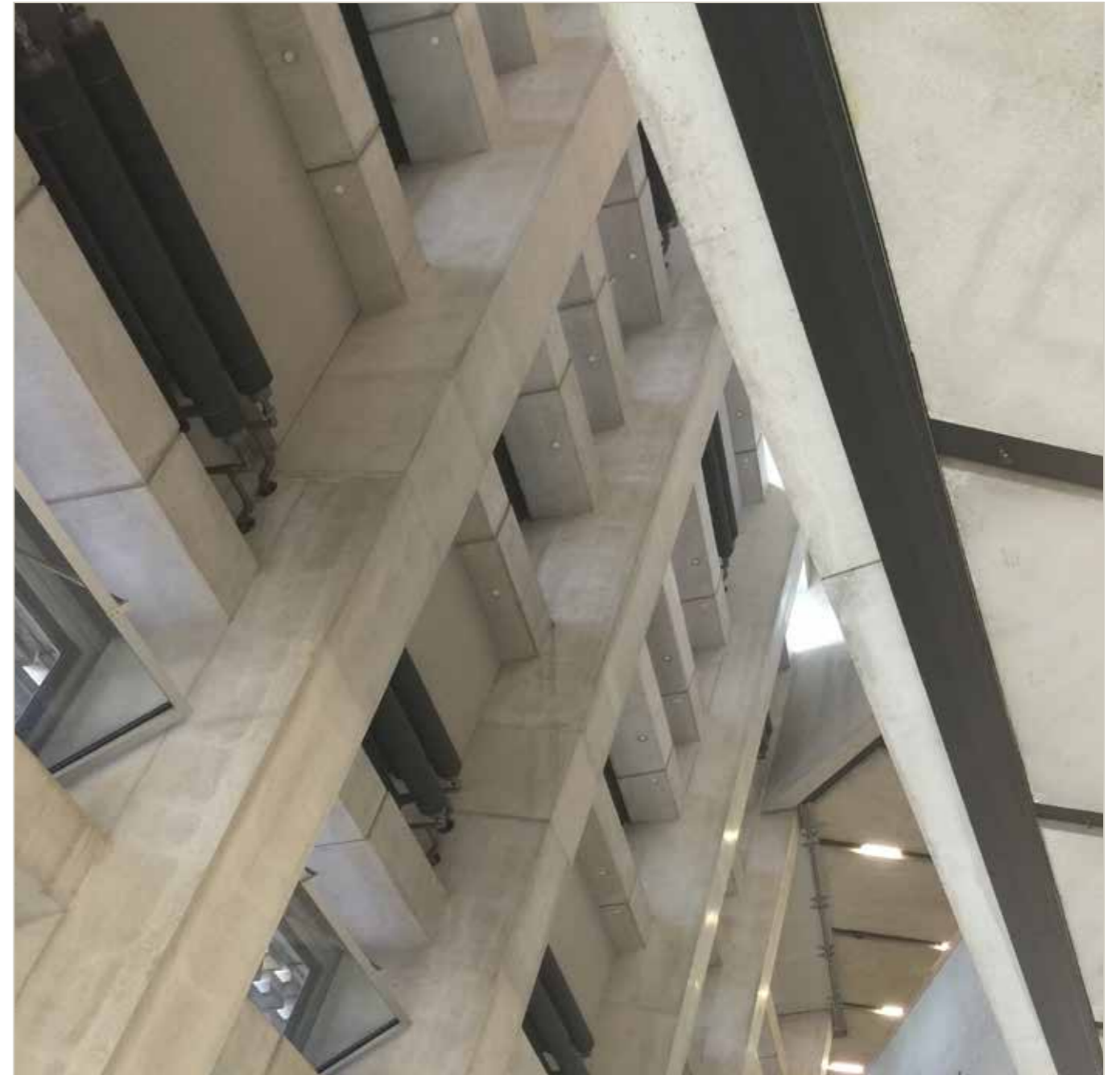


REGENTS
PARK

2013
London
Urbane Design

TATE
MODERN 2

2016
London
Herzog & De Meuron





REFERENCES...

a list of select projects VenturiUK have worked on in recent years.

- Gabriel Square | 2016 | Michael Aukett Architects
- Keynsham Town Hall | 2015 | Aedas
- The Glebe | 2016 | Gumuchdjian Architects
- June House | 2012 | Mole Architects
- Kings College School | 2015 | Allies & Morrison
- Eglon House | 2016 | CHASSAY+LAST
- Kings Mews | 2013 | A+D Studios
- NWCD Cambridge | 2016 | MUMA
- St Barts | 2016 | Sheppard Robson
- Pembridge Crescent | 2016 | Gumuchdjian Architects
- 77 Wimpole St | 2013 | Corrigan + Soundy + Kilaiditi
- Weston Library | 2016 | Wilkinson Eyre Architects
- V&A Museum | 2012 | MUMA
- Mayfair Hotel | 2015 | Ettwein Bridges
- Mottisfont Visitor Centre | 2016 | Burd Haward
- Tate Modern 2 | 2016 | Herzog & de Meuron
- Mount St Jesuit Centre | 2013 | Sketch Design
- Jesus College | 2016 | Niall McLaughlin Architects
- Cedar House | 2015 | Nash Baker Architects
- Whitworth Art Gallery | 2014 | MUMA
- De Vere Gardens | 2015 | David Chipperfield
- Evelyn Grace Academy | 2010 | Zaha Hadid
- Principle Place | 2016 | Foster + Partners
- Dun Laoghaire Library | 2014 | Carr Cotter & Naessens
- Bermondsey Square | 2010 | Urban Salon
- Maggies Centre | 2015 | Reiach and Hall
- Union St Cafe | 2013 | Russell Sage Studios
- Royal Academy of Arts | 2016 | David Chipperfield



CONTACT US...

VENTURIUK LTD.
0800 980 0660
INFO@VENTURIUK.COM
VENTURIUK.COM