

# HEATING

venturiUK



Meinertz are a Danish supplier of high end made to order heating solutions and have through the years supplied special heating elements for some of the most prestigious projects in both Europe and the US.



GALVANISED



PAINTED



STAINLESS



COPPER



## CONVEC

An ultra slim fan assisted trench heating solution for use where space is severely limited.

- Compact 59x135mm design
- Ideal for refurb or where available depth is limited
- Wall, floor & corner solutions
- BMS compatible
- Colour options
- Whisper quiet



## PROLINE

A versatile and stylish linear trench heater needing minimal floor space for high output.

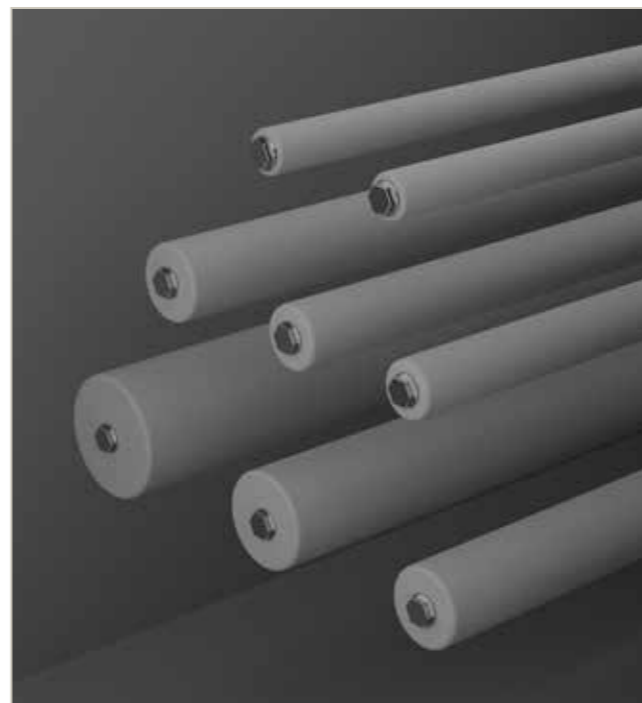
- Custom length and width available
- High heat output
- Supplied with or without steel trench
- Curved and corner solutions
- Low maintenance
- Robust design, withstands 250kg loads



## PLAIN TUBES

Minimalist plain tubes which are robust and easy to clean and available in multiple tube diameters.

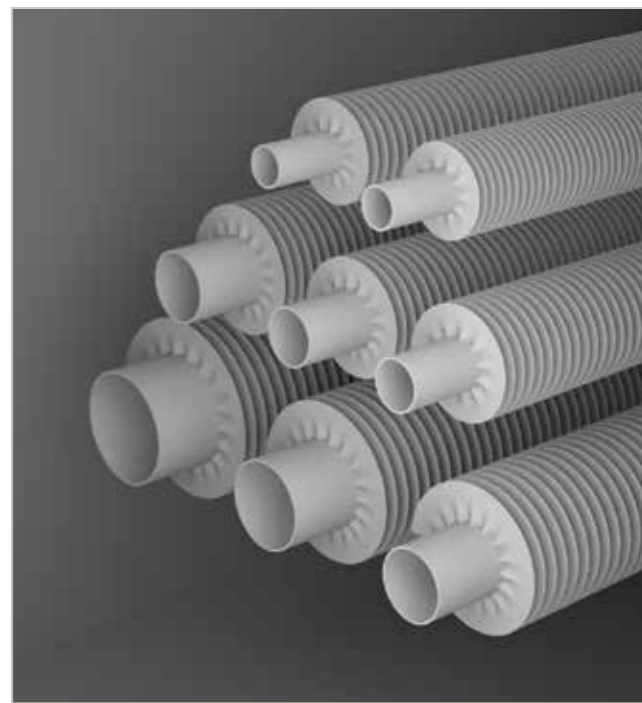
- Wall, floor and ceiling fix
- 0.3 to 6.0m lengths available
- 33 - 101mm diameters
- Curved options
- Clean lines
- Single or stacked options



## FINNED TUBES

Elegant, high performance architectural solution for contemporary or traditional building design.

- Wall or floor fix
- 0.3 to 6.0m lengths available
- 73 - 164mm fin diameters
- Curved options
- Easy to clean
- Single or stacked options



## L-LINE

Unique and contemporary heating solution with clean sharp lines.

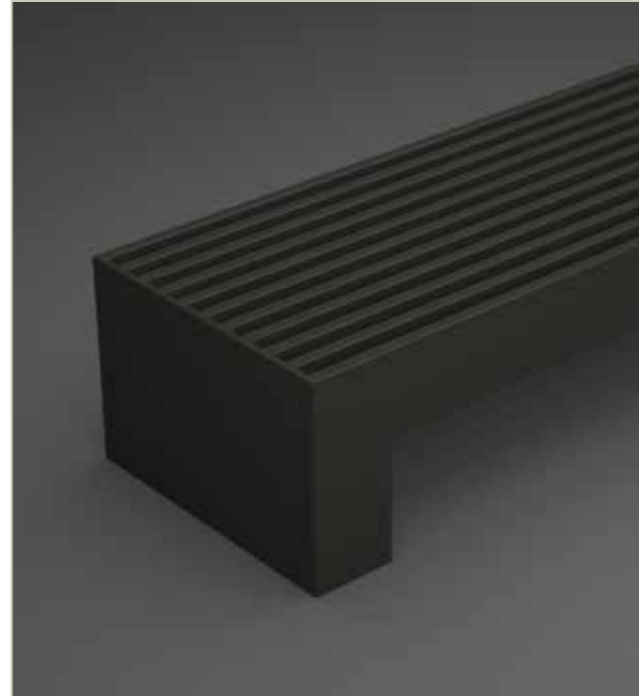
- Clean, sharp delineation
- Fully customisable design up to 3.0m length
- Stand alone feature
- Architectural design, practical function
- Dwindraught or primary heating source



## SKYLINE PLINTH

Form & function combined - giving a practical and aesthetic solution to your heating requirements.

- Fully customisable design up to 3.0m length
- Dwindraught or primary heating source
- Low maintenance, easy clean solution
- Hidden pipework
- Robust but elegant design



34

## BENCH HEATERS

Unique heating solution, with safe and practical seating.

- Space saving, unique design
- Fully customisable
- Architectural feature
- Robust but stylish heating solution
- Various seat options



## FRONT LINE CURTAIN WALL

Sophisticated solution for use in between Curtain Wall Transoms and mullions

- Fully integrated into the facade
- 70mm high to be as invisible as possible
- From 3 to 10 elements to fit the depth required
- Powder Coated to match the Curtain Wall
- Designed to deal with cold downdrafts



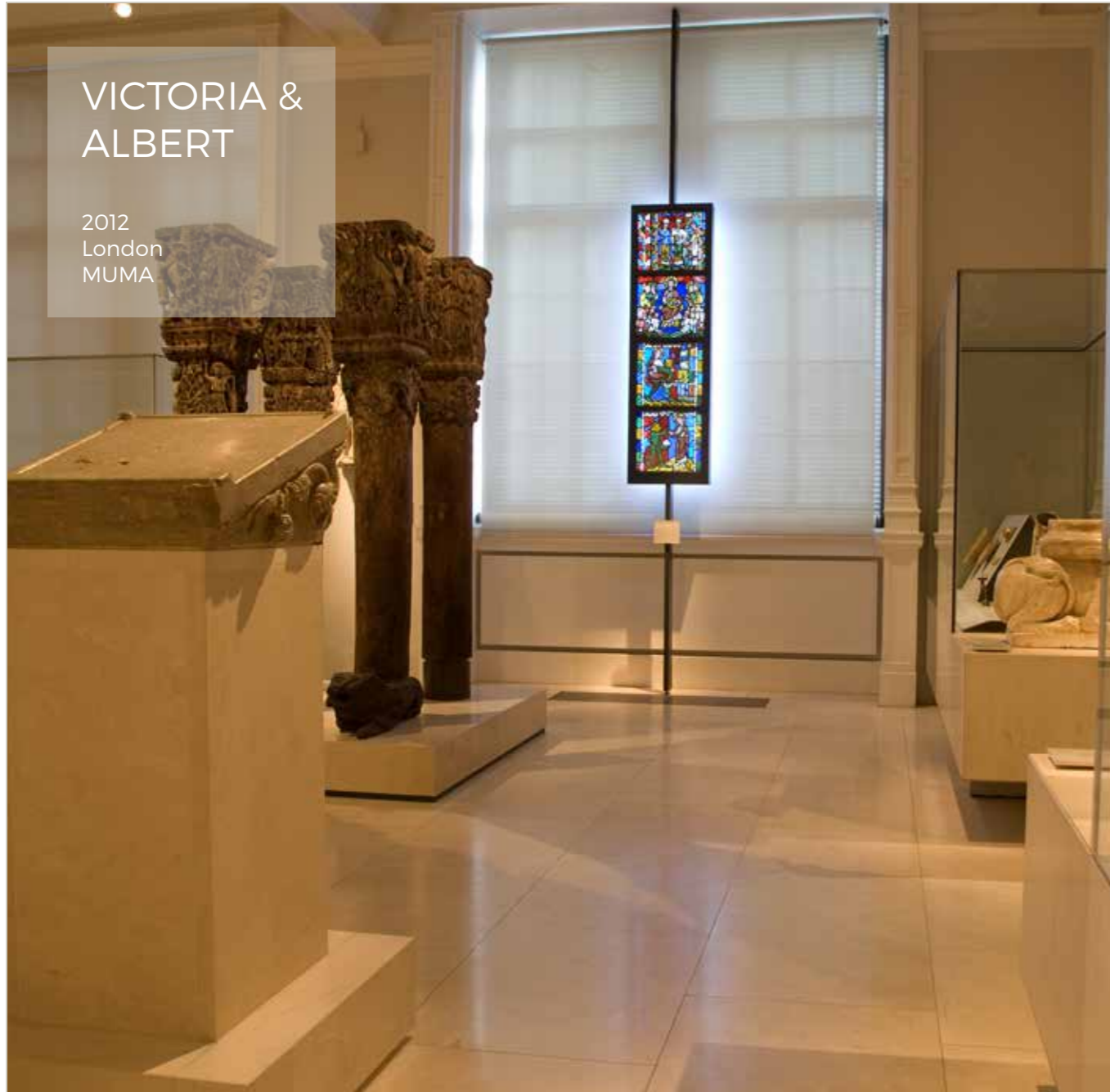
35



## TOWER VIEW

2015  
London  
Thornley & Lumb





VICTORIA &  
ALBERT

2012  
London  
MUMA



REGENTS  
PARK

2013  
London  
Urbane Design

TATE  
MODERN 2

2016  
London  
Herzog & De Meuron





Evelyn Grace  
Academy

2011  
London  
Zaha Hadid Architects



## REFERENCES...

a list of select projects VenturiUK have worked on in recent years.

- Gabriel Square | 2016 | Michael Aukett Architects
- Keynsham Town Hall | 2015 | Aedas
- The Glebe | 2016 | Gumuchdjian Architects
- June House | 2012 | Mole Architects
- Kings College School | 2015 | Allies & Morrison
- Eglon House | 2016 | CHASSAY+LAST
- Kings Mews | 2013 | A+D Studios
- NWCD Cambridge | 2016 | MUMA
- St Barts | 2016 | Sheppard Robson
- Pembridge Crescent | 2016 | Gumuchdjian Architects
- 77 Wimpole St | 2013 | Corrigan + Soundy + Kilaiditi
- Weston Library | 2016 | Wilkinson Eyre Architects
- V&A Museum | 2012 | MUMA
- Mayfair Hotel | 2015 | Ettwein Bridges
- Mottisfont Visitor Centre | 2016 | Burd Haward
- Tate Modern 2 | 2016 | Herzog & de Meuron
- Mount St Jesuit Centre | 2013 | Sketch Design
- Jesus College | 2016 | Niall McLaughlin Architects
- Cedar House | 2015 | Nash Baker Architects
- Whitworth Art Gallery | 2014 | MUMA
- De Vere Gardens | 2015 | David Chipperfield
- Evelyn Grace Academy | 2010 | Zaha Hadid
- Principle Place | 2016 | Foster + Partners
- Dun Laoghaire Library | 2014 | Carr Cotter & Naessens
- Bermondsey Square | 2010 | Urban Salon
- Maggies Centre | 2015 | Reiach and Hall
- Union St Cafe | 2013 | Russell Sage Studios
- Royal Academy of Arts | 2016 | David Chipperfield



## CONTACT US...

VENTURIUK LTD.  
0800 980 0660  
INFO@VENTURIUK.COM  
VENTURIUK.COM